



June 24, 2015

RE: Dominion Virginia Power Haymarket 230kV Transmission and Substation Project

Dear Neighbor,

As you may be aware, Dominion is planning a new electric transmission project in your area, which includes a new 230kV transmission line and substation. This project will support a new high-tech sector business expansion proposed in the Western Prince William area which is projected to exceed the capabilities of our electric distribution system. This means additional capacity at electric transmission-level voltage is required to address the forecasted increase in power demand. We are holding an information session to discuss the project and the route options we are now evaluating.

Wednesday, July 15, 2015, from 5 to 8 p.m.
Battlefield High School, Open Area Cafeteria
15000 Graduation Dr., Haymarket, VA 20169

Routing Study Update

Dominion considers a number of factors when studying options for routing new electric transmission lines. We evaluate a route's constructability and operability while carefully weighing potential impacts on the community, historic assets and the environment. The routing for this project, as with all projects but especially where new right of way is needed, is a sensitive undertaking and not taken lightly. Ultimately, the Virginia State Corporation Commission (SCC) determines the final route alignment.

We understand the community's interest in the "hybrid" overhead/underground option along I-66. While this option will be included in our application, the SCC will not accept this as the only solution. It is important that we study and present various alternatives in order to have a complete application for the SCC to consider, which must include a proposed route, as well as constructible alternative(s). The Company strives in all of its applications to propose the project that addresses the identified need and reasonably minimizes impacts.

The routes currently under consideration are:

- 1) I-66 "Hybrid" Overhead/Underground Alternative (*light blue line on enclosed map*)
- 2) I-66 Overhead Alternative (*dark blue line on enclosed map*)
- 3) Railroad Alternative (*red line on enclosed map*)
- 4) Carver Road Alternative (*green line on enclosed map*)
- 5) Madison Alternative (*orange line on enclosed map*)

The route alternatives we have studied and will recommend the SCC not to consider are:

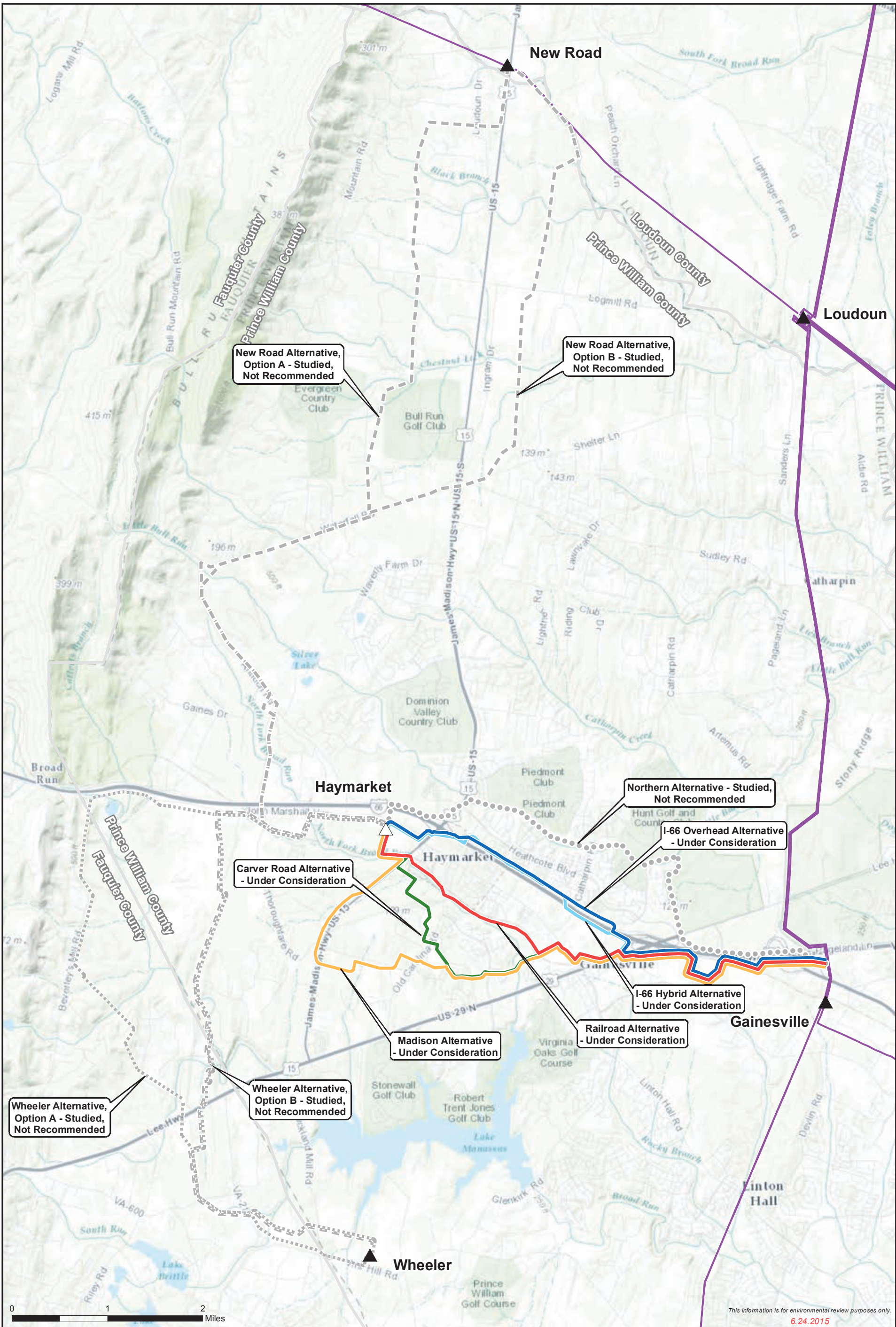
- 1) New Road Alternatives (*grey long dashes on enclosed map*)
- 2) Wheeler Alternatives (*grey short dashes on enclosed map*)
- 3) Northern Alternative (*grey dots on enclosed map*)

Community input continues to be an important part of our project planning and development. We appreciate the community engagement and patience over the last several months and look forward to continuing to share information.

In the meantime, please visit www.dom.com, keyword: *Haymarket* to learn more. You may also contact us by sending an email to powerline@dom.com or calling 1-888-291-0190, Monday – Friday, 7:00a.m. to 5:00p.m.

Sincerely,

Greg Mathe, Manager, Electric Transmission Communications



This information is for environmental review purposes only.
6.24.2015

Under Consideration	Studied, Not Recommended	Existing Dominion Transmission Line
Carver Road Alternative	Northern Alternative	Existing Substation
I-66 Hybrid Alternative	New Road Alternative, Option A	Proposed Haymarket Substation
I-66 Overhead Alternative	New Road Alternative, Option B	
Madison Alternative	Wheeler Alternative, Option A	
Railroad Alternative	Wheeler Alternative, Option B	

1:60,000

Studied Route Alternatives
Haymarket 230kV Transmission
Line and Substation Project
DRAFT - Subject to Change Prior to Filing